

BID ADDENDUM #1

July 30, 2024

Montecito Fire Protection District Fire Station 92 – Gates and Carport ITB# 2024-002

To: Prospective Bidders

This Addendum forms a part of the contract documents and modifies the original bidding documents. Please note this Addendum as received and acknowledged on the proposal submitted.

As posted on the Montecito Fire website on July 26, 2024, the issuance of this Addendum changes the Invitation to Bid schedule as follows: deadline for bidder questions extended to August 2, 2024 and the deadline for Montecito Fire Protection District response to bidder questions has been extended to August 7, 2024. The deadline for submission of bids has also been extended and is August 19, 2024 at 2:00pm.

Modifications

Specifications provided for access equipment and control (see attached brochures):

- Swing Gate Operator – All-O-Matic SW-350 DC (1 HP)
- Swing Gate Keypad – Doorking 1506 Surface Mount
- Pedestrian Gate Keypad – Simplex 1000



818-787-1988

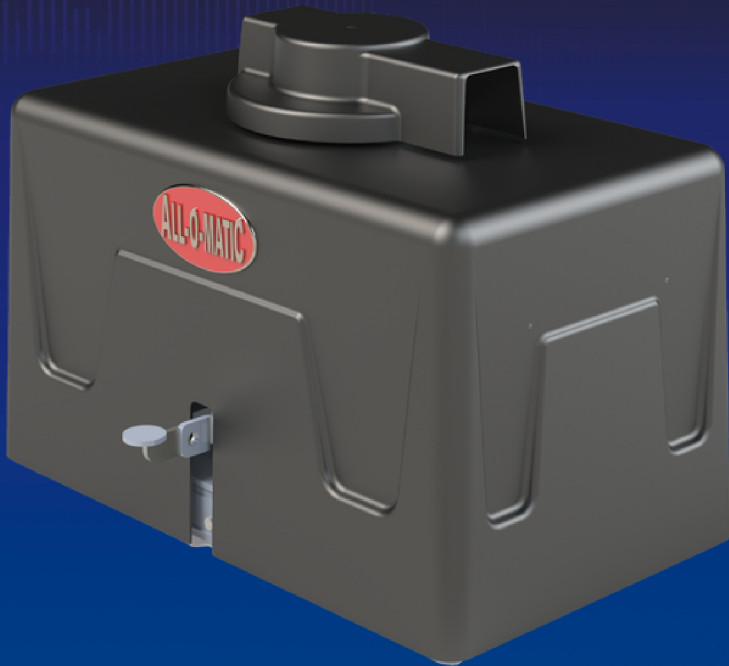
allomatic.net

ALL-O-MATIC

SW-350 DC

SWING GATE OPERATOR

Our low-profile **DC Swing Gate Operator** designed to preserve a gate's beautiful design.



SW-350 DC

- ✓ For Gates Up To 22 Ft. Long
- ✓ Max Gate Weight
½ HP: 2,000 lbs.
1 HP: 2,500 lbs.
- ✓ Integrated Battery Backup
- ✓ Low Profile Heavy Duty Frame
- ✓ Maintenance Free Brushless DC Motor



RESIDENTIAL



COMMERCIAL



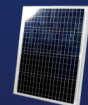
MECHANICAL
FOOT PEDAL
RELEASE



INNOVATIVE
CIRCUIT BOARD



WISE M/S
COMPATIBLE



24VDC SOLAR
POWER OPTION

SLIDERS | **SWINGERS** | **OVERHEADS**

The standard by which all other automatic gate operators are measured.

SCAN FOR
PRODUCT
INFORMATION



UL 325 2018
COMPLIANT

UL 991
COMPLIANT

CSA C22.2 #247



ALL-O-MATIC



818-787-1988

allomatic.net

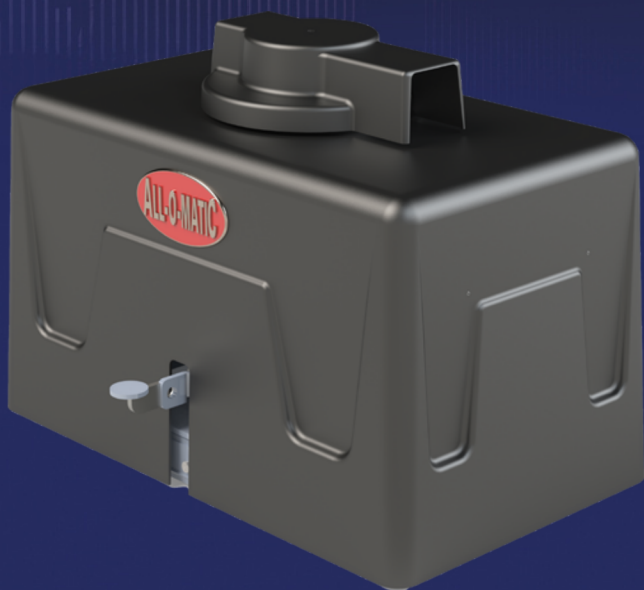


SCAN FOR
PRODUCT
INFORMATION

SPECS

SW-350 DC

SWING GATE OPERATOR



Max Gate Weight	½ HP: 2,000 lbs. 1 HP: 2,500 lbs.
Max Gate Length	22 feet
Warranty	7 year residential - 5 year commercial
Motor	24 VDC brushless - ½ HP and 1 HP motor
Gate Speed	Adjustable 17-25 seconds per 90° opening
Power Options	115/230 VAC single phase and 24 VDC solar panel
Duty Cycle	Continuous
Battery Back Up	Integrated, with (2) 7Ah 12VDC batteries
Battery Back Up Capacity	Up to 250 cycles
Temperature Range	-40 to 160°
Gearbox Ratio	60:1 with internal clutch
Width X Length X Height	14" X 24" X 18"
Shipping Weight	½ HP: 190 lbs. + 35 lbs. arm 1 HP: 205 lbs. + 35 lbs. arm
Emergency Release	Mechanical foot pedal release
Belt Size	4L-360 (AX34)
Main Sprocket Size	40B54X1.25
Chain Size	40NP
Gearbox Sprocket	40B12X1
Limit Shaft Sprocket	N/A
Breaker Requirement	20 amp dedicated
Gearbox Pulley	7" with 3/4" bore
Motor Pulley	2" with 5/8" bore



RESIDENTIAL



COMMERCIAL

AVAILABLE ACCESSORIES



AML-1200B
Mag Lock



GH-1500
Hinges



Fire
Boxes



Solar
Panel



PRIME VD-1
Loop Detector

The Warrantor warrants the SW-350DC Gate Operator. ALL-O-MATIC INC warrants its gate openers for a period of five (5) years in commercial installations, and for a period of seven (7) years in residential installation to be free from defects in circuitry, motor, gear box and workmanship. This warranty applies from the date of purchase to the original owner. Warrantor will repair or, at its option, replace any device which it finds to require service. This device must be sent to the warrantor at the consumer's expense. The warrantor will return the repaired or replaced unit to the customer at the consumer's expense. Labor charges for dealer service or replacement are the responsibility of the owner. These warranties are in lieu of all other warranties either expressed or implied, and ALL-O-MATIC INC shall not be liable for consequential damage. All implied warranties of merchantability and or fitness for a particular purpose are hereby disclaimed and excluded. This limitation is not valid in jurisdictions which do not allow limitation of incidental or consequential damages or limitation of warranty periods. Caution in order to obtain this policy, please complete the registration card and send it by mail within 30 days of purchasing from ALL-O-MATIC INC. or your INSTALLER. If not registered only a one year warranty on all parts will be provided.

The standard by which all other automatic gate operators are measured.

UL 325 2018
COMPLIANT

UL 991
COMPLIANT

CSA C22.2 #247





1500 STAND ALONE DIGITAL KEYPADS ACCESS CONTROL

- RESIDENTIAL • GATED COMMUNITIES • APARTMENT COMPLEXES
- PARKING • CONDOMINIUM/RESIDENCE HALL • MIXED USE
- COMMERCIAL • SELF STORAGE • MAXIMUM SECURITY



1504 surface mount with intercom



1506 flush mount with lighted keys



1506 surface mount



1515 surface mount

- Rugged Steel Cabinet with Stainless Steel Faceplates and Metal Keypads
- PIN (Personal Identification Number) Codes are programmable from the Keypad, or from a DoorKing Smartphone App (1515, 1504 models)
- EEPROM Memory will not lose Programmed Codes during power outages
- Secondary Keypad capability for Controlled Entry / Exit Applications (1506 only)
- 2-Year Limited Factory Warranty



intercom model

1504 can be used with some existing intercom systems



keypad users

enter 4-5 digit unique PIN to gain entry



lighted keys

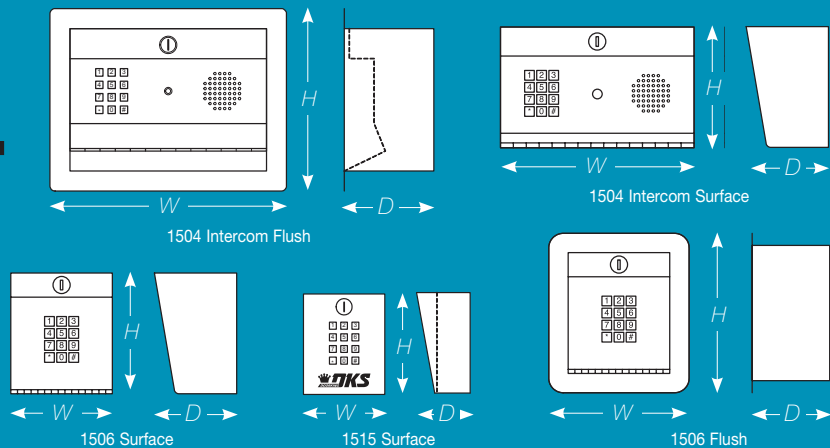
for easy night time operation



android smartphone

for manager programming and user entry (1515 model)

1500 STAND ALONE DIGITAL ACCESS CONTROL KEYPADS



1504 Intercom

10" W x 6.25" H x 5.25" D
(336.5mm W x 381mm H x 88.9mm D)

1506 Surface

5.25" W x 6.25" H x 4.375" D
(285mm W x 330mm H x 120.6mm D)

1506 Flush

keypad with trim ring
7.125" W x 8.375" H x 4" D
(305mm W x 343mm H x 63.5mm D)
rough-in box:
5.625" W x 7" H x 4" D
(305mm W x 343mm H x 63.5mm D)

1515 Surface

4.5" W x 5.375" H x 3.6875" D
(114.3mm W x 136.5mm H x 93.6mm D)

Technical Features

All models

Ideal for Controlling Doors or Gates
Add or delete individual Codes from the Keypad
Add or delete individual Codes from an Android Smartphone using the DKS App (1515 only).
Lighted Keypad
"Hold" Code to latch open a Door or Gate
EEPROM Memory

Miscellaneous

Environmental: -10°F to 115°F (-23°C to 46°C)
Shipping weight approximately 8-20 lb (3.6-9 kg)
Mounting: Surface / Post Mount
Flush mount

1504 with Intercom Substation

Combines the 1506 or 1515 Keypad (and the features of each as listed here) into a Common Housing with an Intercom Sub-Station

A Master Intercom Station (not provided) is required to establish communication with the 1504 (may not be compatible with some intercom systems)

Also available as a Card Reader / Keypad System

1506 Digital Keypads Mechanical

1000 4-Digit Codes
Six 5-Digit Codes
Add or delete individual codes from the Keypad
Time Zone Inputs
Secondary Keypad capability

Electrical

16 Volt AC
Power Transformer included
Form C Dry Contact Relay
30 V 1 amp maximum

1515 Digital Keypads Mechanical

400 Memory Capacity for Momentary Entry or Hold Open Entry Codes or any combination thereof

Selectable 4 or 5-Digit Codes

Low Power Mode for Solar Applications. Less than 1ma current in Low Power Mode

Door Open Time settable from 1/4 second to 99 seconds

Wrong Entry Code Lockout settable from 3-9 tries and 1-9 minutes

Programming via the Keypad or from the DoorKing Android Digital Lock Manager App using Near Field Communication (NFC)

DoorKing Smart Open App for users to activate the Entry Codes using their Android NFC Smartphone. Apps are free from the Google Play Store

Electrical

12 to 24 Volt AC or DC power
Form C Dry Contact Relay
30 V 1 amp maximum
Request to Exit Input



Access Control Solutions since 1948

Distributed by:

MEMBER:



DOORKING, INC.

120 Glasgow Avenue, Inglewood, California 90301 U.S.A.

Tel: 310-645-0023 FAX: 310-641-1586 www.doorking.com

© 2018 All Rights Reserved. Product specifications may change without notice. Rev. 4/18

BEYOND SECURITY



Simplex® 1000



Features

Access Control

Mechanical pushbutton lock – eliminates problems and costs associated with issuing, controlling, and collecting keys and cards. Provides exterior access by combination, while allowing free egress

No Battery

Fully mechanical lock eliminates the material and labor expense of battery replacements

Locking Device

Cylindrical latch with 3-hour UL/ULC fire rating on "A" labeled doors

Number of Codes

Single access code—one easy-to-manage code for all users

Programming

Lock is easily programmed via keypad without removing lock from the door

Handing

Factory-handed for left-hand doors; easily changed in the field

Key Override (Optional)

Small format interchangeable cores, large format removable cores

Operation Modes

- Pushbutton Access
- Passage (select models)—allows access without using the lock entry code. Feature activated from the inside with a thumbturn or key (included with all passage feature models).
- Lockout (select models)—disables the lock from the inside so that the entry code cannot be used to gain access. Access is permitted using the key override only.

Economical

A cost effective access control solution

Mechanical Features

Construction	Heavy-duty cylindrical lock housing with cast front housing; unified trim plate; cast knobs
Numeric Keypad	Vandal resistant, solid metal pushbuttons
Standard Finishes	Satin Chrome: 26D (626), Antique Brass 05 (609)
Optional Finishes	Bright Brass 03 (605), Bright Chrome 026 (625)
Backset	2 3/4" (70 mm), 2 3/8" (60 mm)
Latch	1/2" (13 mm) throw latch, 3/4" (19 mm) throw latch (optional)
Minimum Stile Recommended	5" (127 mm)
Weight	7.25 lbs. (3.3 kg)
Strike	Standard strike plate; ASA strike plate

Key Override

Interchangeable Cores	Small format—Best and equivalents (6 or 7-pin length); core not included
Removable Cores	Large format—Medeco/ASSA/Yale/Abloy (5 or 6-pin length), Corbin Russwin (6-pin length), Schlage, and Sargent; core not included

Installation

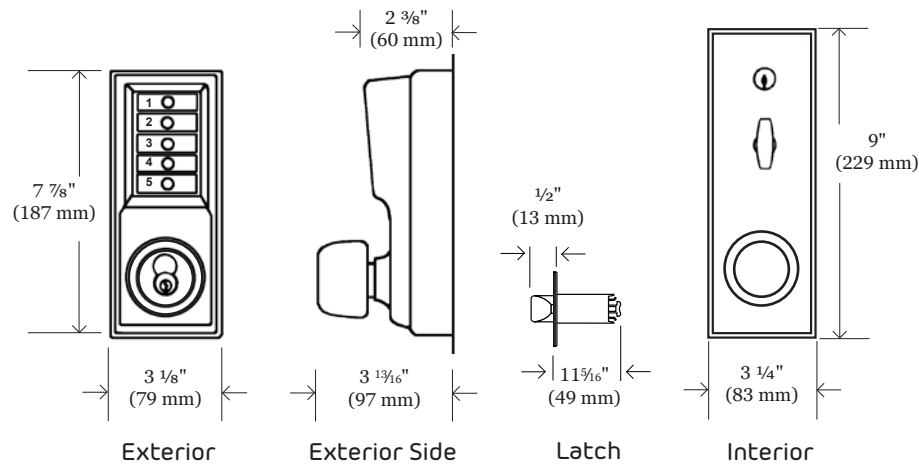
Door Preparation	Easily installs on wood or metal doors. ASA 161 door preparation with additional through bore holes required.
Door Thickness	Pre-assembled to accommodate 1 5/8" (41mm) to 1 7/8" (48mm) doors. Hardware included to cover door thickness applications: 1 3/8" (35mm) to 1 1/2" (38mm), 2" (51mm) to 2 1/4" (57mm)
Items Supplied Include	Lock assembly, installation manual, full-scale template, combination change plug and access key, and required installation hardware

Certification and Testing

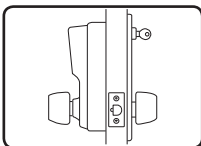
Durability	D.O.D. Compliant 5220.22M for supplemental access control; weather resistant
Fire Rating	3-hour UL/ULC fire rating for "A" labeled doors

Warranty

Warranty	3-year warranty
-----------------	-----------------

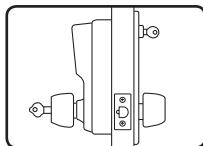


Model 101x



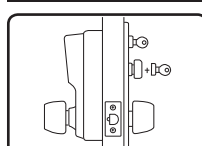
- Combination Entry
- Interior Combination Change

Model 102x



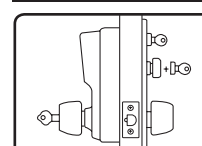
- Combination Entry
- Key Override (not supplied)
- Interior Combination Change

Model 103x



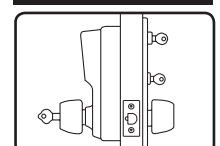
- Combination Entry
- Interior Combination Change
- Passage

Model 104x



- Combination Entry
- Key Override (not supplied)
- Passage
- Interior Combination Change

Lockout Models



- Combination Entry
- Key Override (not supplied)
- Interior Combination Change
- Lockout from Inside Trim