

# **BID ADDENDUM #2**

July 30, 2024

## **Montecito Fire Protection District Fire Station 92 – Gates and Carport ITB# 2024-002**

To: Prospective Bidders

This Addendum forms a part of the contract documents and modifies the original bidding documents. Please note this Addendum as received and acknowledged on the proposal submitted.

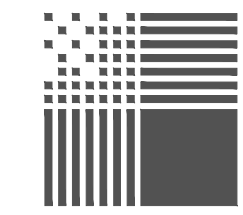
As posted on the Montecito Fire website on July 26, 2024, the issuance of this Addendum changes the Invitation to Bid schedule as follows: deadline for bidder questions extended to August 2, 2024 and the deadline for Montecito Fire Protection District response to bidder questions has been extended to August 7, 2024. The deadline for submission of bids has also been extended and is August 19, 2024 at 2:00pm.

### **Modifications**

Electrical Plan - the attached electrical plan (E1.0 to E4.0) is to further clarify the electrical work for the addition of the security gates and the carport.

Solar - the electrical plan includes preparatory work for future solar. In addition to what is shown, a 1-1/4" conduit from the carport structure post to the pull box at the building to be installed for future panels on the roof.

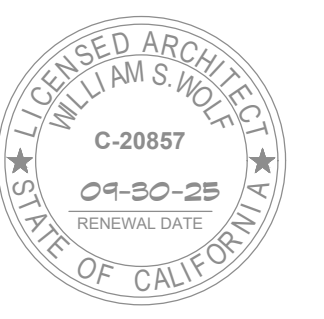
Camera – CAT6 conduit run from Comm 112 for future camera at the gate.



PACIFIC ARCHITECTS

1117 COAST VILLAGE RD. MONTECITO, CA 93108 8 0 5 5 6 5 3 6 4 0

MONTECITO FIRE STATION 92 2300 SYCAMORE CANYON ROAD SANTA BARBARA, CA



ALL IDEAS, DESIGNS AND PLANS INDICATED OR REPRESENTED BY THESE DRAWINGS ARE OWNED BY PACIFIC ARCHITECTS AND WERE CREATED AND DEVELOPED FOR USE IN CONNECTION WITH THE SPECIFIED PROJECT. NONE OF SUCH IDEAS, DESIGNS, OR PLANS SHALL BE USED FOR ANY PURPOSE WHATSOEVER WITHOUT THE WRITTEN PERMISSION OF PACIFIC ARCHITECTS.

Revision	Description	Date
1	CARPENT CHANGE	8/24/23
2	PLAN CK	3/26/24
3	PLAN CK	5/29/24

Job Number: \_\_\_\_\_ Date: 7.26.2024

E1.0

Sheet 01

### GENERAL NOTES

- VISIT JOB SITE AND VERIFY EXISTING CONDITIONS PRIOR TO BID.
- THE ELECTRICAL WORK SHALL BE INSTALLED IN ACCORDANCE WITH THE 2022 CALIFORNIA ELECTRICAL CODE AND ALL APPLICABLE LOCAL ORDINANCES. WHERE PLANS CALL FOR A HIGHER STANDARD THAN APPLICABLE CODES, THE PLANS SHALL GOVERN.
- CONDUIT RUNS ARE SHOWN DIAGRAMMATICALLY. EXACT LOCATIONS SHALL BE DETERMINED IN THE FIELD TO SUIT FIELD CONDITIONS.
- ALL ELECTRICAL EQUIPMENT, APPLIANCES AND LIGHTING FIXTURES SHALL BE LISTED BY A RECOGNIZED TEST LAB AND BEAR THAT LABEL OF APPROVAL.
- CONTRACTOR SHALL FURNISH, INSTALL AND CONNECT ALL MATERIAL AND EQUIPMENT FOR THIS WORK UNLESS OTHERWISE NOTED.
- FURNISH DISCONNECT SWITCHES AT REMOTE MOTORS.
- ALL SPACES AS INDICATED ON PANELS OR SWITCHBOARDS SHALL BE COMPLETE WITH HARDWARE AND BUSSING FOR FUTURE BREAKER OR SWITCH.
- CHECK ARCHITECTURAL PLANS FOR DOOR SWINGS BEFORE INSTALLING SWITCH OUTLETS.
- GROUNDING AND BONDING SHALL BE PER CODE PLUS ANY ADDITIONAL PROVISIONS SPECIFIED OR SHOWN ON DRAWINGS.
- ALL CONDUIT RUNS SHALL CONTAIN A CODE SIZED GREEN GROUND WIRE.
- THESE PLANS ARE NOT COMPLETE UNTIL APPROVED BY THE AUTHORITY HAVING JURISDICTION.
- ALL CONDUCTORS SHALL BE IN CONDUIT.
- ALL CONDUCTORS SHALL BE COPPER WITH TYPE THHN/THWN INSULATION.
- COORDINATE WITH SERVING ELECTRICAL UTILITY COMPANY AND MAKE PROVISIONS FOR ELECTRICAL SERVICE ACCORDINGLY. INCLUDE ALL SERVICE COSTS AND UTILITY COMPANY CHARGES IN BID.
- COORDINATE WITH SERVING TELEPHONE UTILITY COMPANY AND MAKE PROVISIONS FOR TELEPHONE SERVICE ACCORDINGLY. INCLUDE ALL SERVICE COSTS AND ANY UTILITY COMPANY CHARGES IN BID.
- COORDINATE WITH SERVING CABLE TELEVISION COMPANY AND MAKE PROVISIONS FOR CABLE TELEVISION ACCORDINGLY. INCLUDE ALL SERVICE COSTS AND ANY UTILITY COMPANY CHARGES IN BID.
- ALL PERMITS SHALL BE OBTAINED AND PAID FOR BY CONTRACTOR.

#### ACCESSIBILITY NOTES

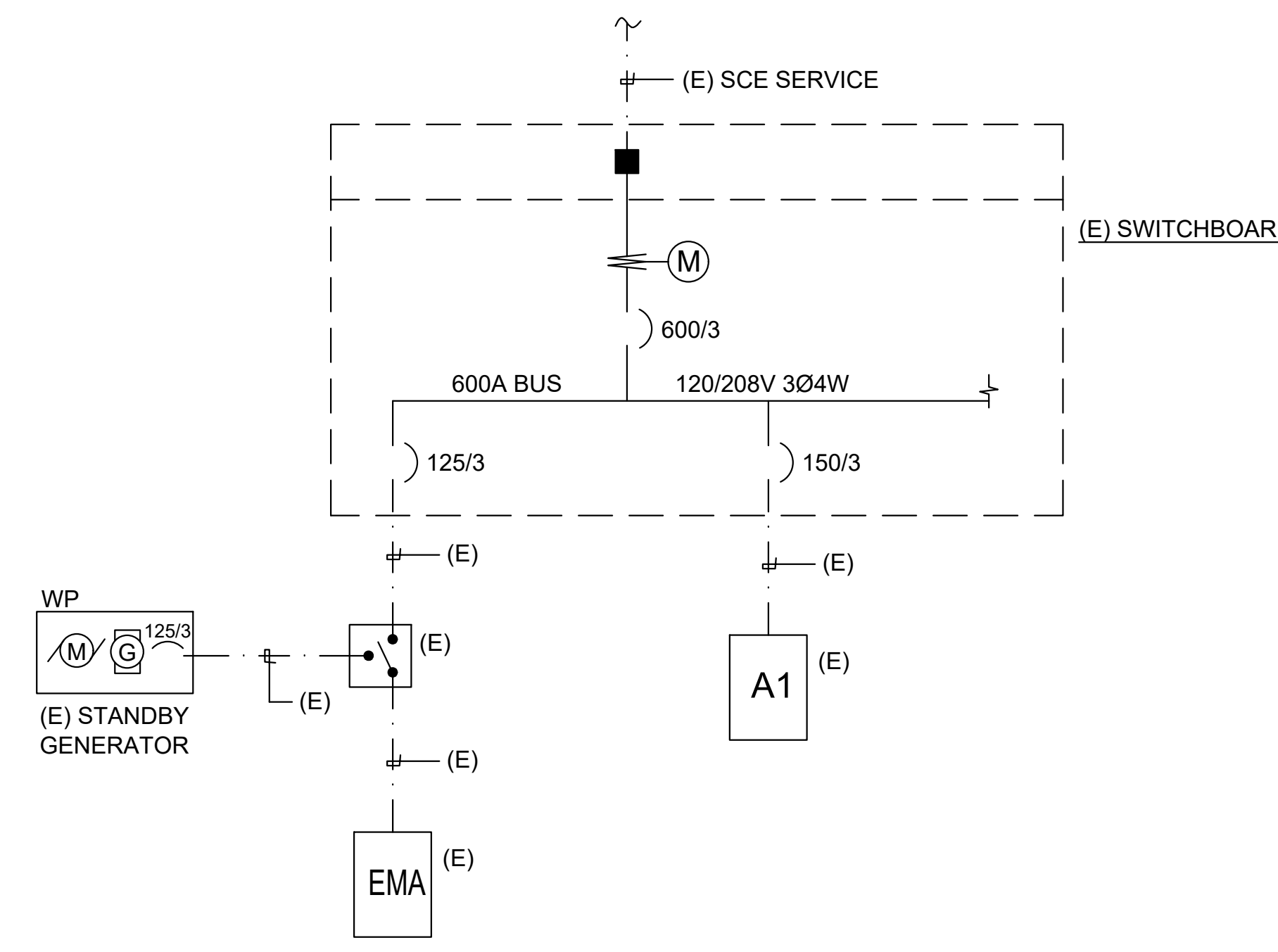
- Installation of switches, outlets and controls to reflect the accessibility requirements of the 2022 CBC Chapters 11A and 11B for Accessibility.
- CBC 11B-308.1.1 Electrical controls and switches intended to be used by the occupant of a room or area shall be located within the allowable reach ranges. Low reach shall be measured from the bottom of the outlet box and high reach is measured to the top of the outlet box.
  - CBC 11B-308.1.2 Electrical receptacle outlets on branch circuits of 30 amperes or less and communication system receptacles shall be located in the allowable reach range. Low reach shall be measured from the bottom of the outlet box and high reach is measured to the top of the outlet box.
  - CBC 11B-308.2.1 High forward reach that is unobstructed shall be 48 inches maximum and the low forward reach shall be 15 inches minimum above finish floor or ground.
  - CBC 11B-308.2 Forward Reach Obstructed - Electrical receptacle outlets shall be located no more than 44 inches measured from the top of the receptacle outlet box when the obstruction is over 20" and does not exceed 25". When the depth is less than 20" height can be increased to 48". (desk counters)
  - CBC 11B-308.3 Side Reach Obstructed - Electrical receptacle outlets shall be located no more than 46 inches measured from the top of the receptacle outlet box when the obstruction is over 10" and does not exceed 24". When the depth is less than 10" height can be increased to 48".
  - Overhang light fixtures or wall fixtures projecting more than 4" from the wall surface shall be a minimum of 80" above the walking surface.

### SYMBOLS

- CONDUIT EXISTING
  - CONDUIT CONCEALED IN WALL OR CEILING
  - CONDUIT CONCEALED UNDER FLOOR OR BELOW GRADE
  - CONDUIT STUBBED OUT AND CAPPED
  - CONDUIT TURNED UP
  - CONDUIT TURNED DOWN
  - HATCH MARKS INDICATE NO. OF #12 WIRES IN CODE SIZED CONDUIT (3) MAX. IN 1/2" C., (5) MAX. IN 3/4" C., (8) MAX. IN 1" C., NO MARKS = 2#12
  - HOME RUN; LETTER INDICATES PANEL, NUMBER(S) INDICATES CIRCUIT(S).
  - SAWCUT
  - GROUND CONNECTION
  - DISTRIBUTION SWITCHBOARD OR PANEL
  - PANEL, BRANCH CIRCUIT TYPE, SURFACE AND FLUSH
  - SIGNAL TERMINAL CABINET, SURFACE & FLUSH
  - LINEAR SURFACE FIXTURE
  - OUTLET DATA: BAR INDICATES WALL MOUNT, LETTER INDICATES SWITCH CONTROL, NO. INDICATES CIRCUIT, SURFACE FIXTURE ON FLUSH OUTLET.
  - RECESSED FIXTURE WITH JUNCTION BOX FOR THRU WIRING
  - EXIT LIGHT WITH ARROWS AS SHOWN ON PLANS, WALL AND CEILING MOUNT.
  - LOW LEVEL EXIT SIGN, +6" AFF, 4" FROM DOOR JAMB
  - LIGHT FIXTURE DESIGNATION, LETTER INDICATES TYPE, NO. INDICATES WATTAGE. SEE FIXTURE SCHEDULE.
  - MECHANICAL EQUIPMENT DESIGNATION. SEE MECHANICAL DRAWINGS.
  - SPECIAL RECEPTACLE - SEE PLAN
  - METER
  - FLUSH FLOOR RECEPTACLE
  - RECEPTACLE, DUPLEX, 15A, 125V, NEMA 5-15R +18" U.N.O.
  - DUPLEX RECEPTACLE MTD. ABOVE BACKSPASH
  - DUPLEX RECEPTACLE W/LOWER HALF SWITCHED
  - GFI
  - GROUND FAULT CIRCUIT INTERRUPTING RECEPTACLE
  - DOUBLE DUPLEX RECEPTACLE
  - CEILING RECEPTACLE
  - RECEPTACLE, DUPLEX, 20A, 125V, NEMA 5-20R +18" U.N.O.
  - JUNCTION BOX 4" SQUARE, 1-1/2" DEEP U.N.O.
  - THERMOSTAT F.B.O. +48"
  - MOTOR, NO. INDICATES HORSEPOWER
  - CLOCK OUTLET +7-6" U.N.O.
  - DISCONNECT SWITCH, NON-FUSED
  - DISCONNECT SWITCH FUSED HORSEPOWER RATED OR SIZED AS NOTED
  - COMBINATION MAGNETIC STARTER WITH DISCONNECT SWITCH AND FUSES
  - MAGNETIC MOTOR STARTER W/OVERLOADS IN EACH PHASE
  - DIMMER W/INTEGRAL "ON-OFF" SW.
  - PUSHBUTTON
  - PHOTOCELL
  - SMOKE DETECTOR
  - TELEPHONE/COMPUTER/DATA OUTLET, TWO GANG BOX W/1 GANG COVERPLATE & GROMMETED OPENING +18" U.N.O.
  - CABLE TV OUTLET +18" U.N.O.
  - MOTION SENSOR
  - EXISTING SWITCH
  - SINGLE POLE SWITCH
  - DOUBLE POLE SWITCH
  - THREE WAY SWITCH
  - SWITCH W/PILOT LT.
  - MANUAL MOTOR STARTER
  - FIRE ALARM CONTROL PANEL
  - GFI
  - GROUND FAULT CIRCUIT INTERRUPTING
  - LABOR SAVING TANDEM
  - MAIN LUGS ONLY
  - WITH
  - CONDUIT ONLY
  - WEATHERPROOF
  - FURNISHED BY OTHERS, INSTALL & CONNECT
  - UNLESS NOTED OTHERWISE
  - NATIONAL ELECTRICAL CODE
  - NOT IN CONTRACT
  - EXISTING
  - NEW
  - REMOVE
  - RELOCATE
  - SURFACE MOUNT
  - UNDERGROUND
  - COLD WATER PIPE
  - ABOVE FINISHED FLOOR
  - HEATING AND AIR CONDITIONING RATED CIRCUIT BREAKER
  - NIGHT LIGHT
- NOTE: NOT ALL SYMBOLS SHOWN ARE USED ON THIS PROJECT.

(E) PANEL SCHEDULE "EMA"													
REMARKS		LOAD			CIRCUIT			CIRCUIT			REMARKS		
		ΦA	ΦB	ΦC	TYPE	NO.	AMP	TYPE	NO.	AMP			
1ST FLOOR LIGHTS					1	20	1	2	20	1	REC		
SPACE					1	20	3	4	20	1	COMPUTER REC		
(N) GATE		1200			1	20	9	10	20	1	COPY MACHINE		
SPACE					1	20	13	14	20	1	PRINTER		
SPARE					1	20	15	16	20	1	RADIO RM REC		
MICROWAVE					1	20	17	18	20	1	SMOKE DETECTORS		
WARM TRAY					1	20	19	20	20	1	DAY ROOM REC		
CELL PHONE AMP					1	20	21	22	20	1	DOOR MOTOR		
FAU - 1					1	20	23	24	20	1	-		
FAU - 2					1	20	25	26	20	1	-		
FAU - 3					1	20	27	28	20	1	SERVICE REEL		
RADIO RM REC					1	20	29	30	20	1	CORD DROP		
REFRIGERATOR					1	20	31	32	20	1	SHOP NORTH DOOR		
EF HOOD, LT					1	20	33	34	20	1	SHOP SOUTH DOOR		
RANGE REC					1	20	37	38	20	1	SERVICE REEL		
APPLIANCES					1	20	39	40	20	1	CORD DROP		
					1	20	41	42	20	1	MCTB		
					1	20	41	42	20	1	FACP		

AMPS= 67A DEMAND X 1.25 = 84A + 10A = 94A MINIMUM BKR A.I.C. RATING= 10,000 AMPS SYM



### SINGLE LINE DIAGRAM

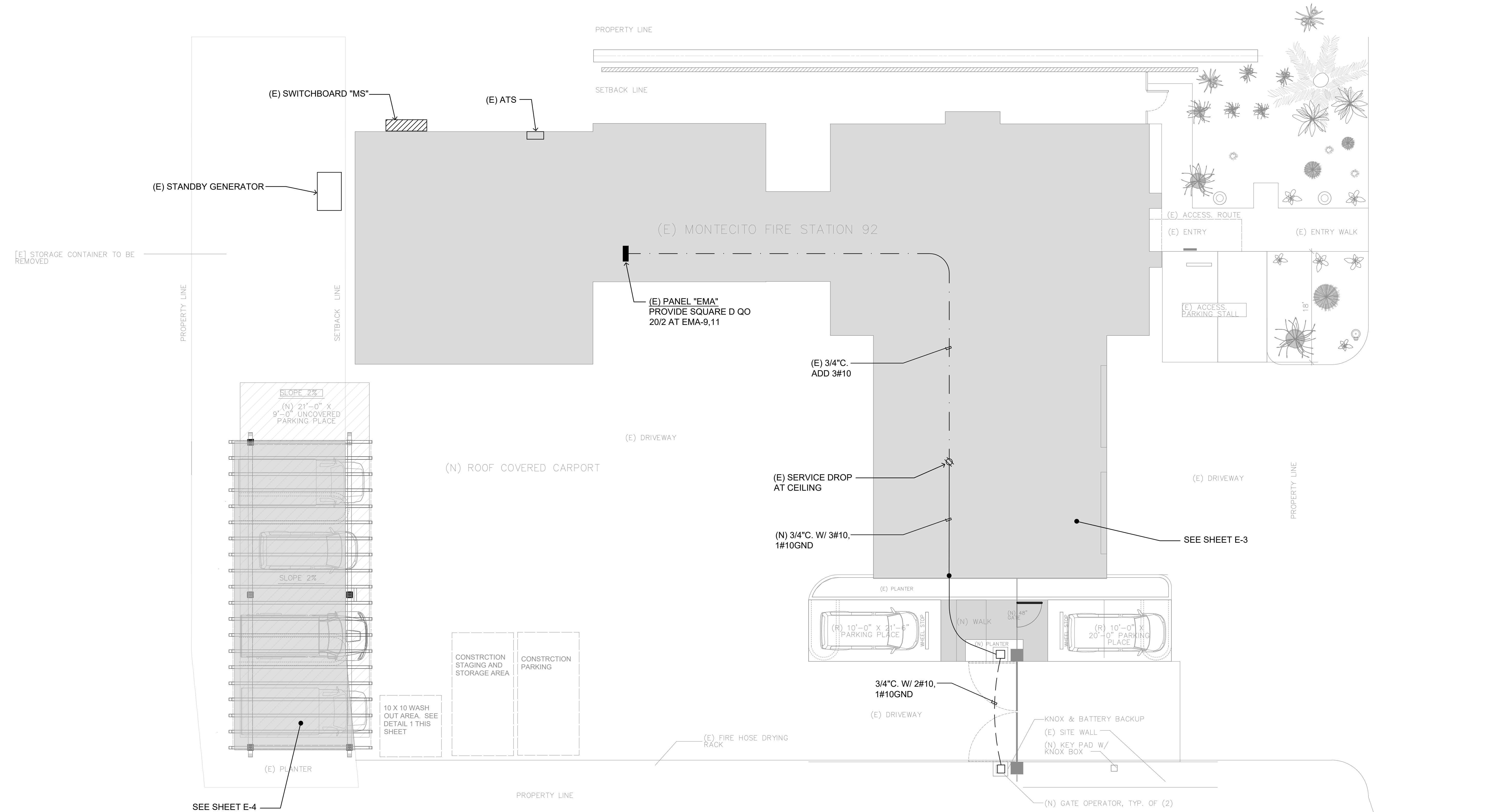
SCALE: NONE

A E-1

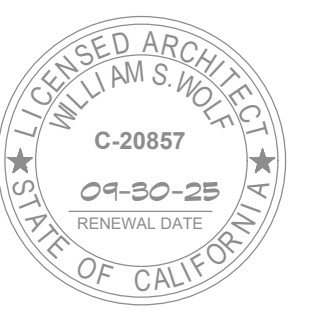


PACIFIC ARCHITECTS

1117 COAST VILLAGE RD.  
MONTECITO, CA 93108  
8 0 5 5 6 5 3 6 4 0



MONTECITO FIRE STATION 92  
2300 SYCAMORE CANYON ROAD  
SANTA BARBARA, CA



ALL IDEAS, DESIGNS AND PLANS INDICATED OR REPRESENTED BY THESE DRAWINGS ARE OWNED BY AND ARE THE PROPERTY OF PACIFIC ARCHITECTS AND WERE CREATED AND DEVELOPED FOR USE IN CONNECTION WITH THE SPECIFIED PROJECT. NONE OF SUCH IDEAS, DESIGNS, OR PLANS SHALL BE USED FOR ANY PURPOSE WHATSOEVER WITHOUT THE WRITTEN PERMISSION OF PACIFIC ARCHITECTS.

Revision	Description	Date
1	CARPORIT CHANGE	8/24/23
2	PLAN CK	3/26/24
3	PLAN CK	5/29/24

Job Number:  
Date: 7.26.2024



ELECTRICAL SITE PLAN  
SCALE: 1/8" = 1'-0"



E2.0

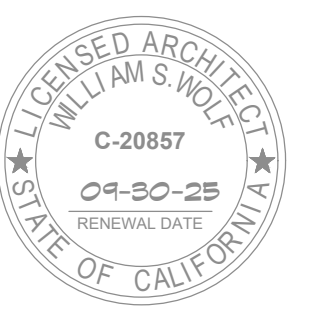
Sheet 01



PACIFIC ARCHITECTS

1117 COAST VILLAGE RD.  
MONTECITO, CA 93108  
8 0 5 5 6 5 3 6 4 0

MONTECITO FIRE STATION 92  
2300 SYCAMORE CANYON ROAD  
SANTA BARBARA, CA



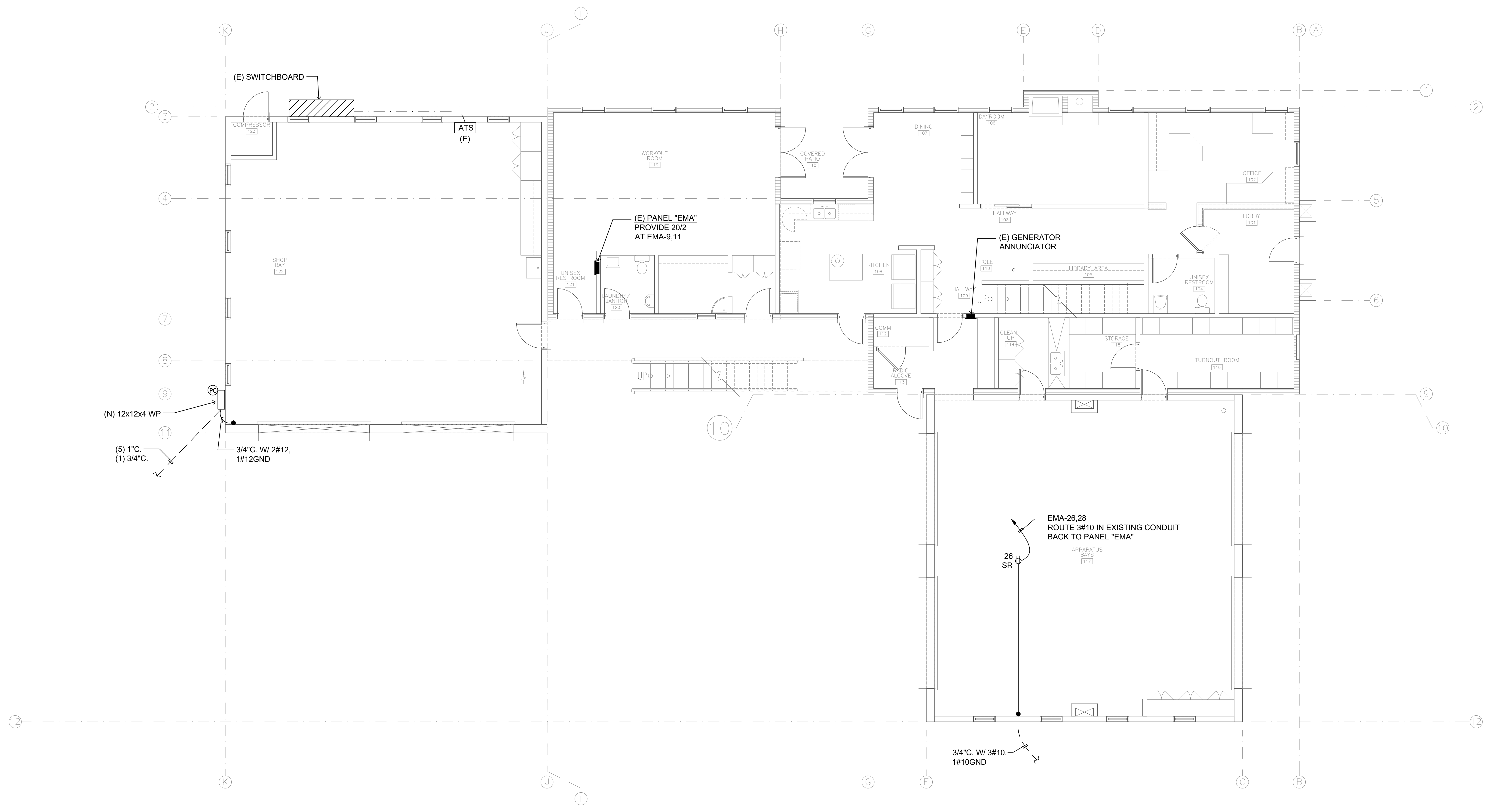
ALL IDEAS, DESIGNS AND PLANS INDICATED OR REPRESENTED BY THESE DRAWINGS ARE OWNED BY AND ARE THE PROPERTY OF PACIFIC ARCHITECTS AND WERE CREATED AND DEVELOPED FOR USE IN CONNECTION WITH THE SPECIFIED PROJECT. NONE OF SUCH IDEAS, DESIGNS, OR PLANS SHALL BE USED FOR ANY PURPOSE WHATSOEVER WITHOUT THE WRITTEN PERMISSION OF PACIFIC ARCHITECTS.

Revision	Description	Date
1	CARPORIT CHANGE	8/24/23
2	PLAN CK	3/26/24
3	PLAN CK	5/29/24

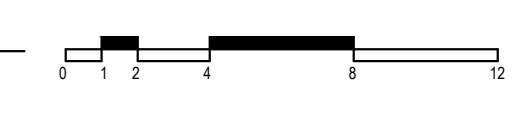
Job Number: \_\_\_\_\_  
Date: 7.26.2024

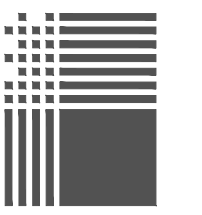
ES.O

Sheet 01



NORTH  
ELECTRICAL FLOOR PLAN  
SCALE: 3/16" = 1'-0"



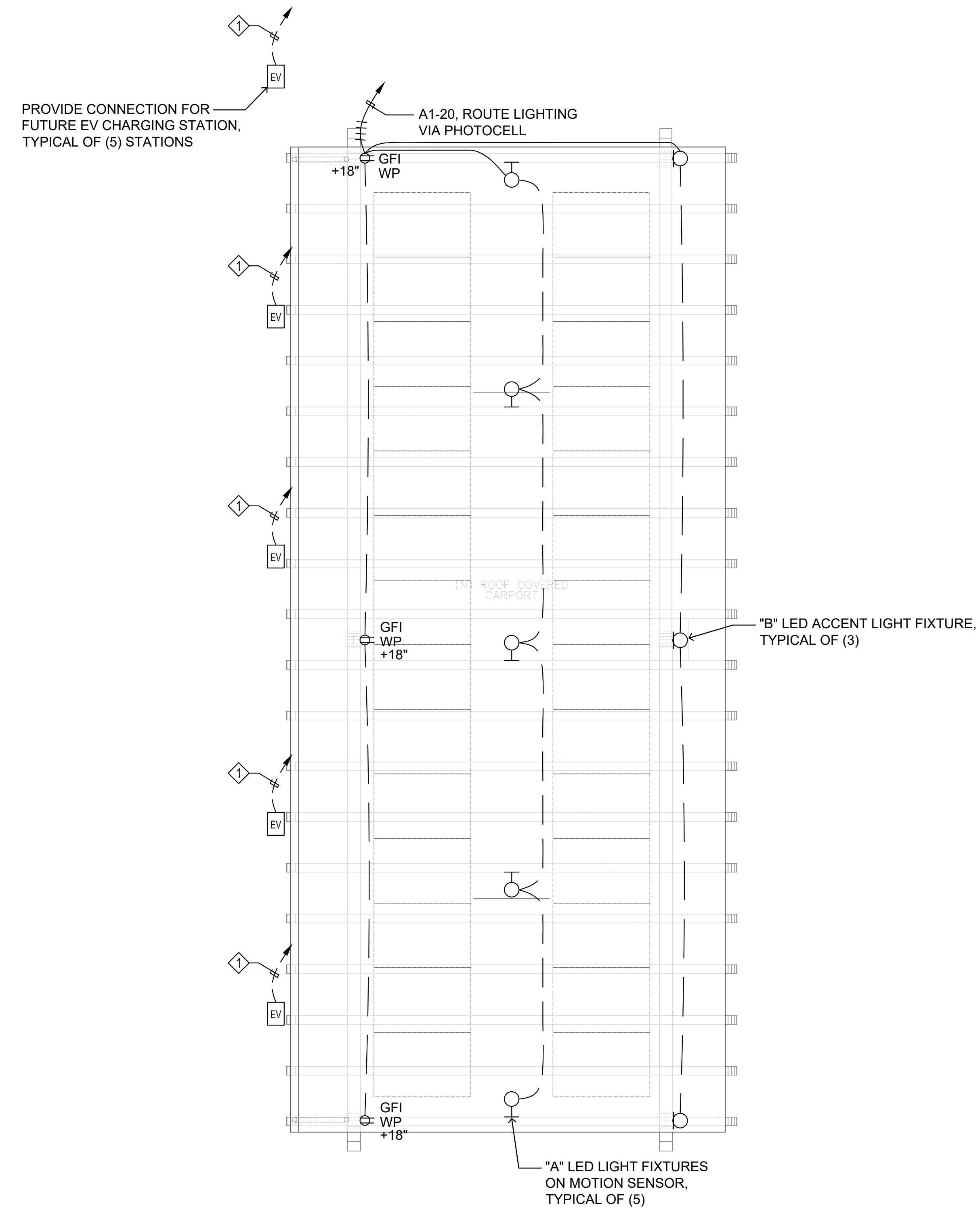


PACIFIC ARCHITECTS

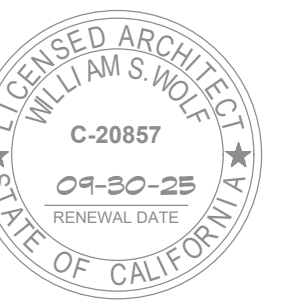
1117 COAST VILLAGE RD.  
MONTECITO, CA 93108  
8 0 5 5 6 5 3 6 4 0

### ELECTRICAL NOTES

1" C.O. TO 12x12x4 WP PULLBOX



MONTECITO FIRE STATION 92  
2300 SYCAMORE CANYON ROAD  
SANTA BARBARA, CA



ALL IDEAS, DESIGNS AND PLANS INDICATED OR REPRESENTED BY THESE DRAWINGS ARE OWNED BY AND ARE THE PROPERTY OF PACIFIC ARCHITECTS AND WERE CREATED AND DEVELOPED FOR USE IN CONNECTION WITH THE SPECIFIED PROJECT. NONE OF SUCH IDEAS, DESIGNS, OR PLANS SHALL BE USED FOR ANY PURPOSE WHATSOEVER WITHOUT THE WRITTEN PERMISSION OF PACIFIC ARCHITECTS.

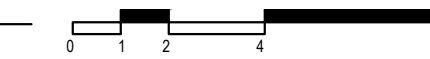
Revision	Description	Date
1	CARPORIT CHANGE	8/24/23
2	PLAN CK	3/26/24
3	PLAN CK	5/29/24

Job Number: \_\_\_\_\_  
Date: 7.26.2024



### CARPORIT ELECTRICAL PLAN

SCALE: 1/4" = 1'-0"



E4.0